

Denka Supercement SC30 Concrete

Ultra-quick hardening concrete

Description

Denka SUPERCEMENT SC30 Concrete is Ultra-quick hardening concrete. It consist of three component material which is **Component A** comprising a mixture of powdered ordinary Portland cement, calcium sulfo aluminate and selected sand. **Component B** consists of aggregate and **Component C** is a liquid part which contains water and liquid admixture. **Denka SUPERCEMENT SC30 Concrete** is most suitable for emergency works where construction time is limited.

Uses

Emergency construction works as road, bridge, airport, railway, bridge, harbors.



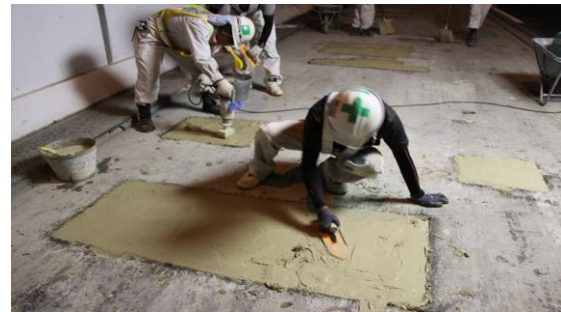
Repairing for expansion joint of Bridge



Repairing for apron of Airport



Repairing for Tollgate of Highway



Patching by Repair Concrete

Advantages

- Easy to mix and apply.
- 30N/mm² strength obtainable in 3 hours
- High Early Strength enables early operation.
- Excellent hydration activity
- Achieved of good initial strength
- Good cost performance than resin concrete
- It can be applied to wet conditions

Physical Properties

Compressive Strength, N/mm ²	
3 hrs	> 30
1 day	> 40
7 days	> 45
28 days	> 50
Tensile Strength at 28 days, MPa	3.0
Setting Time, min	>15

Application Instruction

Surface Preparation

Concrete surfaces should be clean, sound and free from oil, grease, laitance and loosely adhering particles. Metal surfaces (iron and steel) should be free from scale, rust, oil and grease.

All absorbent surfaces must be well saturated with clean water, but be free of any surface water or puddles prior to the application of **Denka SUPERCEMENT SC30 Concrete**.

Mixing

Pour Component B into the pan type concrete mixer followed by Component A and Component C. Mix for 3 minutes until the concrete homogenous.

Place the concrete into the repair area and used vibrator for compaction.

Level the concrete using the trowel for finishing. Carry out curing until a predetermined time. It is recommended to used curing compound (Eg: Estocure R90) during the curing process.

Packing Size and Yield

Denka Supercement SC30 Concrete

Component A : 28.4kg



Component B : 27.5kg



Component C : 4.24kg



Yield

Denka Supercement SC30 Concrete	25L / Set
	1m ³ / 40 sets

Pan type concrete mixer



Cleaning

Wash all equipment with water after used.

Technical Support

Denka offers a technical support package to specifiers, end-user and contractors, as well as on site technical assistance.

Storage

Supercement SC30 Concrete has a shelf life of 6 months in unopened containers, kept in a dry store. In high humidity locations, the shelf life may be reduced.

Precautions

- Refer to the Safety Data Sheet (SDS) before use.
- Use ASAP once mixed as the mixed cement will rapidly harden.
- Wear protective gear (goggles, mask, gloves, and rubber boots) while handling the product. Do not dispose of the product in drains.
- If any part of the body comes into contact with **SUPERCEMENT SC30 Concrete**, wash copiously with water as it is alkaline.
- Once opened, the product should be used up completely. Otherwise, reseal for storage.
- The product should be stored in a dry area, indoors, and out of direct sunlight.
- For further information, please contact Denka Construction Solutions Malaysia Sdn Bhd.

Additional Information

Denka Construction Solutions Malaysia Sdn Bhd and offers a wide range of complementary products, which includes waterstops, waterproofing products, grouts, anchors, specialized flooring products. In addition, a wide range of products formulated for repair and refurbishment of spalled concrete are available.

Denka Infrastructure Technologies Pte Ltd

The JTC Summit, 8 Jurong Town Hall Road
#07-01 Singapore 609434
Tel: +65 6216 0580 Fax: +65 6224 3840
www.denka-dipl.com.sg

Denka Construction Solutions Malaysia Sdn Bhd (Formerly known as Estop Sdn Bhd)

No. 18 Jalan Utas 15/7, Seksyen 15,
40200 Shah Alam, Selangor Darul Ehsan, Malaysia
Tel: +60 3 5510 8810 Fax: +60 3 5518 8202
www.denka-cs.com